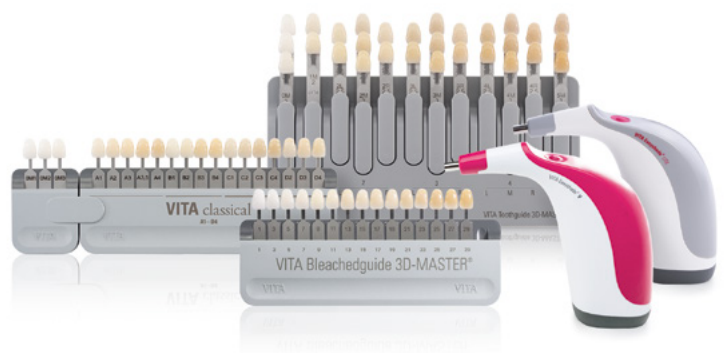


VITA



VITA TOOTH SHADE DETERMINATION

Versatile solutions for the
PERFECT MATCH in tooth shade





Superior performance requires experience.

A forward-looking approach also depends on traditional values.

Dear business partners, customers and interested parties from the world of esthetic dentistry and dental technology,

Every technological development we have launched on the market at VITA in our more than 100 years of history, was and is the result of our unique experience in this field. Passion for our core competency in tooth shade determination, state-of-the-art expertise and a desire for optimization are the powerful values driving this experience. Motivated by your trust in our solutions, we use the comprehensive knowledge that we have gained to shape the future each day, to set new benchmarks and to exceed your expectations in providing tooth shade determination that is second to none.

Our focus is on precise tooth shade reproduction. This also includes establishing reliable processes in laboratories and dental practices, improving the workflow, saving time and money, and ultimately producing esthetic results. As a company that is focused both on research and on solution development, these are the principles that we follow. We do this by providing dentists and dental technicians worldwide with technically outstanding innovations that support the entire lifecycle of dental prosthetics. When we talk about customer satisfaction, we are also talking about the satisfaction of our customers' customers. As I said, our goal is to provide solutions. And the best solutions are those that are developed collaboratively.

As an independent, family-run company, we have remained true to our values and are focused on our relationships with our customers. Reliability and partnership are elements that we cultivate and are cornerstones that are firmly anchored in our tradition and role as a market leader.

In the spirit of tradition and innovation, warm regards from

Dr. Emanuel Rauter
Managing Partner

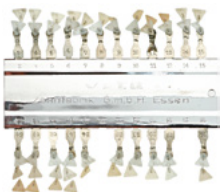
International standard.

Your specialists for tooth shades.
Since 1924.

VITA Zahnfabrik was the first dental company to describe natural tooth shades with a scientific approach, and to document them in the form of shade guides that have since become the international standard.

Firmly rooted in this expertise, VITA is a strong and reliable partner for practices and laboratories. The fact that four out of five tooth shade determination procedures are now carried out using one of our systems, underlines the importance of our solutions in natural, esthetic tooth reproduction.

- Clear benefits with considerable potential for added value:**
- Fast and reliable tooth shade determination
 - Precise and complete communication of the correct tooth shade
 - Two established tooth shade systems for all your needs – from standard dental prosthetics to highly-esthetic restorations



1924
Targeted research of tooth shades, as well as the first shade guides



1956
Introduction of the first uniform shade standard Illustration: Current design of VITA classical A1–D4®



1998
VITA SYSTEM 3D-MASTER®
VITA Toothguide 3D-MASTER®
For the first time, tooth shades can be systematically determined and reproduced



2004
VITA Easyshade®
First generation



2007
VITA Bleachedguide 3D-MASTER®
Tool for planning and monitoring the tooth whitening process



2008
VITA Linearguide 3D-MASTER®
VITA Easyshade® Compact



2013
VITA Easyshade® Advance 4.0



2015
VITA Easyshade® V



2023
VITA Easyshade® LITE

VITA shade guides

The standard for dental shade determination.

Performance based on a reliable system.

The challenge every day is to achieve a true-to-life reproduction of the tooth shade. Selecting a reproducible shade, communicating the exact shade to the dental technician and checking the shade of the restoration in the laboratory require process reliability based on a standard. VITA is the standard for dental shade determination.

Tips on determining tooth shade with a VITA shade guide. By practitioners for practitioners.

- Whenever possible, determine the tooth shade using a standardized daylight lamp
- Make sure that the surroundings are neutral in terms of color. Lipstick and cosmetics should be removed, and bright clothing covered by a gray cape
- Make your selection quickly. In case of doubt, trust your initial decision, as the eye already tires after approx. 5 – 7 seconds
- Disinfect the shade guide after each shade determination

The classic since 1956



VITA classical A1–D4® shade guide with VITA Bleached Shades

- Internationally established system of 16 natural, empirically compiled tooth shades
- Straightforward shade selection, thanks to quick shade sample comparisons with the natural tooth
- Three additional tooth whitening shades (VITA Bleached Shades)



The tooth shade systems from VITA enable reliable, clinically proven tooth shade determination."

PD Dr. med. dent. habil. Karl Martin Lehmann,
University Medical Center of the
Johannes Gutenberg-University Mainz
and Praxis Dr. Lehmann, Bonn

Scientific background.

From the color space to the tooth shade system.



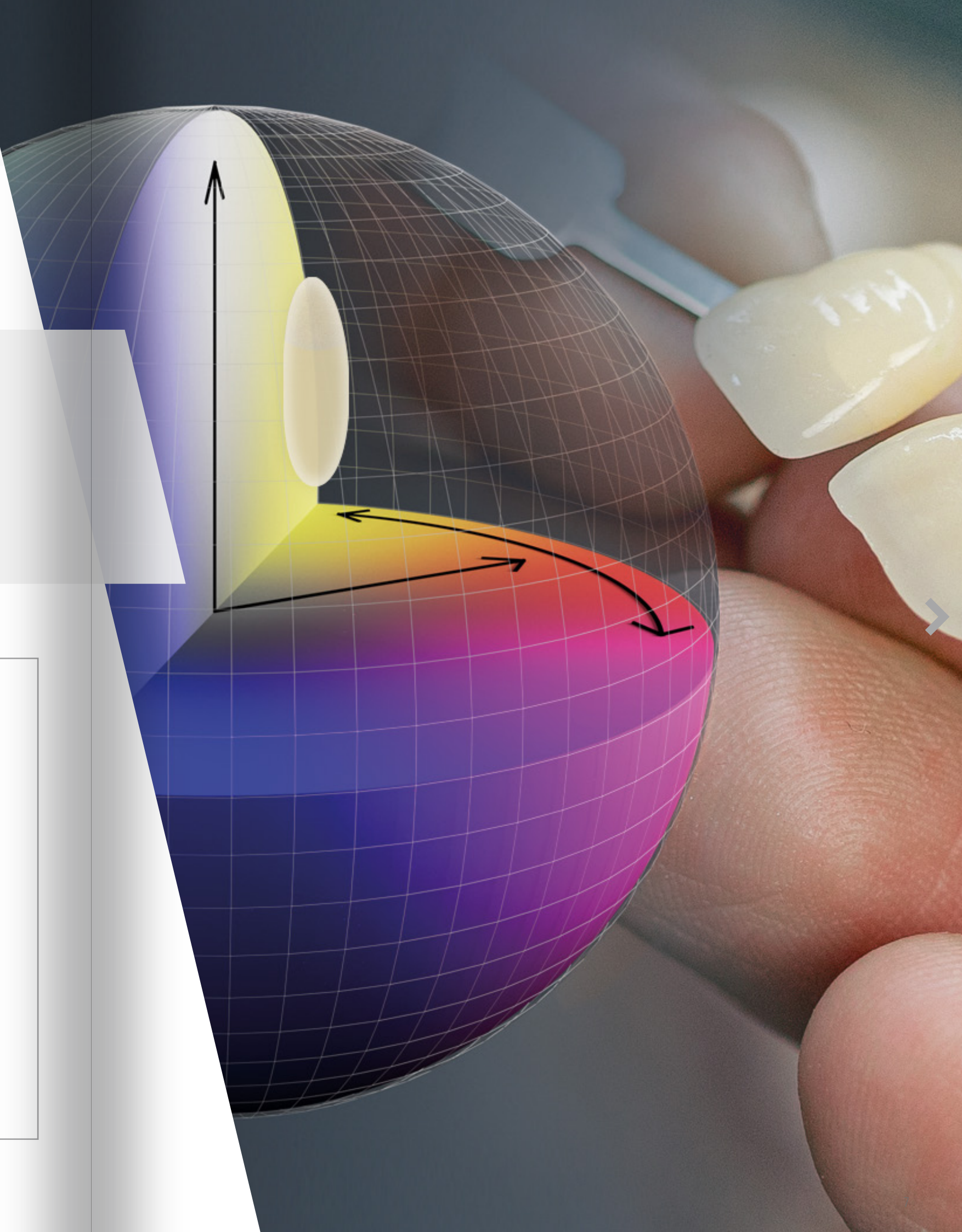
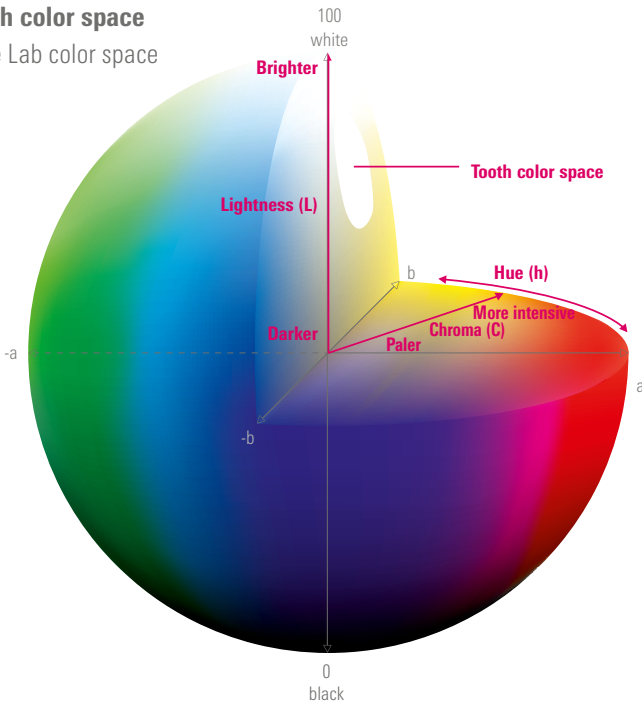
VITA is synonymous with leadership and quality when it comes to color in dentistry.”
Prof. Rade D. Paravina, D.D.S., M.S., Ph.D., Houston, USA

A world of colors

Lightness, chroma and hue are the features that allow all natural shades to be uniquely defined. The entire color spectrum can be represented as a sphere, which is effectively a globe of colors. The range of natural tooth shades is included and only represents a small area. Colors can be uniquely described in a quantitative fashion by specifying numerical values for the three mutually independent elements of L (lightness), C (chroma) and h (hue).

Based on this scientific knowledge, VITA has developed the solution for shade determination with the VITA SYSTEM 3D-MASTER.

LCh tooth color space
Complete Lab color space

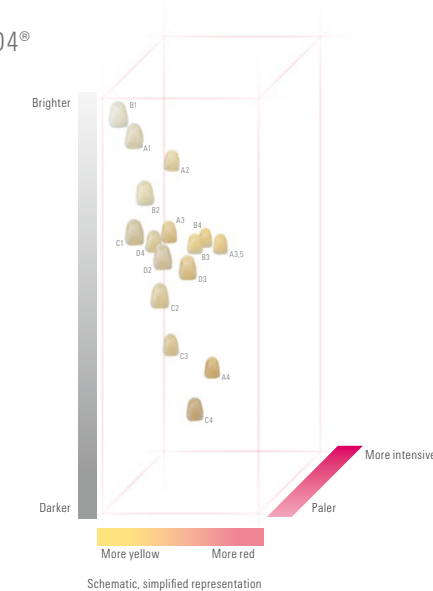


The VITA SYSTEM 3D-MASTER.

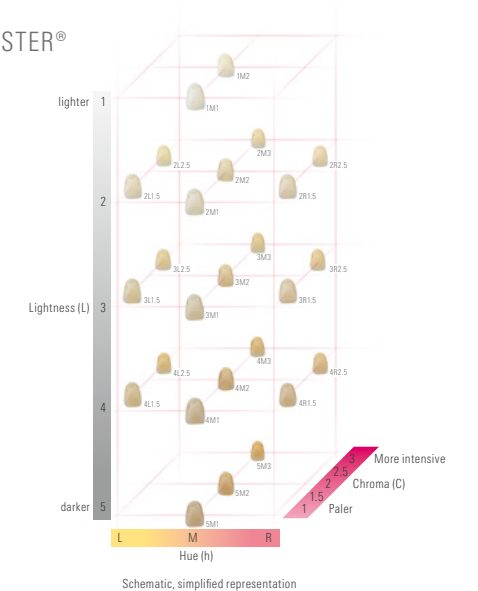
Precise navigation through the color space of esthetics

While the shades of the VITA classical A1-D4® shade guide were compiled empirically and were unevenly distributed in a limited tooth shade space, the VITA SYSTEM 3D-MASTER is based on a systematic, uniform spatial arrangement of the shades. This scientifically based system of the VITA SYSTEM 3D-MASTER navigates you and your team through the tooth shade space with high precision. The outcome is a larger selection of colors and the option to accurately define intermediate colors.

VITA classical A1–D4®



VITA SYSTEM 3D-MASTER®



More options

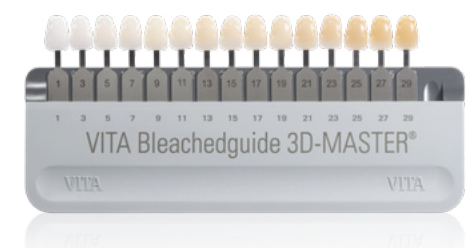
VITA Toothguide 3D-MASTER® with Bleached Shades

- Tooth shade determination in three steps
- 26 natural and systematically arranged tooth shades; in addition, three shades for tooth whitening (VITA Bleached Shades)
- Clear organization of the shade guide in terms of lightness, chroma and hue
- Possibility of creating intermediate shades by mixing



VITA Bleachedguide 3D-MASTER®

- Instrument for determining the level of lightness for the tooth whitening process (bleaching)
- 29 levels of lightness based on VITA SYSTEM 3D-MASTER
- Realistic depiction of tooth lightening, as well as easy communication with patients, thanks to the clear and transparent structure

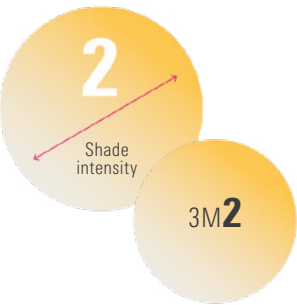
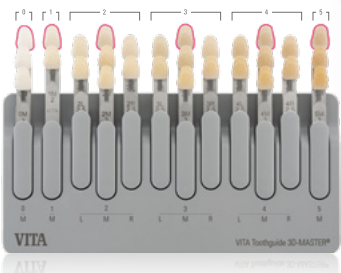


Systematic tooth shade determination.

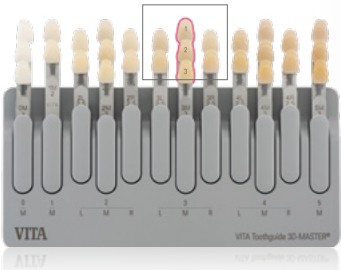
Three steps to the right shade



1. Determining the lightness
The lightness dimension is the most relevant for determining the correct tooth shade, which is why it is determined first. In the VITA Toothguide 3D-MASTER®, the lightest shade is always arranged at the top section of the shade guide.



2. Determining the chroma
The chroma/shade saturation describes whether there is a high or low amount of a particular hue. The chroma is a gradient that goes from the top of the shade guide to the bottom.



3. Hue
The color hue dimension includes all of the different mixtures of the primary colors red, blue and yellow. The hue of natural tooth color is between yellow and red. In the VITA SYSTEM 3D-MASTER, the middle shade M lies between a reddish shade R and a more yellowish shade L.





Digital tooth shade determination

VITA Easyshade® V

Optimum shade determination. Maximum reliability.

VITA Easyshade V supports dentists and dental technicians with everything from tooth shade determination and communication, to reproduction and checking the shade of the finished ceramic dental restoration, improving process reliability – also for planning and carrying out bleaching processes.

- Easy and accurate shade determination in seconds
- Versatile measurement options: natural teeth, ceramic restorations and bleaching treatments
- Reliable process and simple communication between dental laboratory and practice
- Efficient: saves time and cost, due to fewer complaints
- Professional documentation and simulation of bleaching results

VITA Easyshade® V



The advantages

Efficient

Easy and accurate shade determination in seconds.

Versatile

Can be used on natural teeth, ceramic restorations and for planning bleaching treatments.

Reliable

More efficient process and communication between practice and dental laboratory.





Digital tooth shade determination

VITA Easyshade® LITE

Digital shade determination reduced to the essentials.

VITA Easyshade® LITE enables easy and fast digital shade determination for natural teeth, using the proven VITA classical A1–D4 and VITA SYSTEM 3D-MASTER shade systems.

Simple handling – precise shade information

Using the traffic light principle, the device shows whether the measured tooth shade corresponds to a tooth shade value for both the VITA SYSTEM 3D-MASTER and the VITA classical A1–D4 shade guide. If no shade value is an exact match, the display indicates how strongly, and in what way the nearest shade value deviates from the measured natural tooth.

With VITA Easyshade LITE, you can determine the natural tooth shade quickly, simply and precisely. There are even more possibilities with the VITA Easyshade V.



VITA Easyshade® LITE

The advantages

Fast

Results in seconds for efficient processes.

Easy

Digital shade determination with one-click operation, without prior knowledge or background knowledge.

Precise

High-precision spectrophotometer technology ensures exact tooth shade measurement and a reliable process.

Professional tooth shade communication.

VITA mobileAssist+

The simple way of communicating mobile tooth shades.

Thanks to the convenient VITA mobileAssist app, tooth shade information can be easily and efficiently transferred between the practice and the laboratory. The data from VITA Easyshade V is wirelessly transmitted to the app via an internal Bluetooth interface, and can be combined with a patient photo and sent through email. All of the relevant tooth shade information and patient photos can be sent conveniently from a smartphone or tablet.



VITA Assist

Professional tooth shade communication and documentation for dental practice and laboratory.

The Windows-based PC software VITA Assist professionally documents and manages dental findings, as well as tooth shade information. VITA Assist allows integration of the VITA Easyshade V measurement results into digital patient photos and offers additional image editing tools, as well as a wide range of comment functions. The database allows for efficient patient case management and information exchange between practice and laboratory.



A digital approach is the only economical way of calculating and communicating tooth colors – ideally with VITA Easyshade® V."

Dr. med. dent. Philipp Grohmann
Dentist & Dental Technician
Specialist in Reconstructive Dentistry, Switzerland



VITA Easyshade®

Which Easyshade is right for you?

While Easyshade V offers a wide range of measurement options that also support communication with the laboratory, Easyshade LITE focuses on straightforward use exclusively on natural teeth.



I would like ...	VITA Easyshade® V	VITA Easyshade® LITE
... to precisely determine the shade of natural teeth using VITA classical A1 – D4 or the VITA SYSTEM 3D-MASTER shade guide.	✓	✓
... to get information on shade deviations between the measured tooth and the nearest shade value.	✓	✓
... a reliable tool for monitoring and for consulting with bleaching treatments, including the simple transfer of image and patient data.	✓	-
... concrete recommendations as to how, if necessary, an even more accurate match to the measured tooth shade can be achieved, for example by mixing shades (in VITA SYSTEM 3D-MASTER).	✓	-
... to precisely determine restorations using VITA classical A1 – D4 and the VITA SYSTEM 3D-MASTER shade guides.	✓	-
... to use VITA Assist Software and the VITA mobileAssist + app for tooth shade communication and documentation.	✓	-
... Lab and LCH values to be displayed.	✓	-
Operation function	Measurement key, touch display	Measurement key
Use	Battery operation (plug)	2x AA batteries



We are happy to help.

Hotline Sales Support

Phone +49 7761 562-884
Fax +49 7761 562-299
8 a.m. to 5 p.m. CET
info@vita-zahnfabrik.com

Technical Hotline

Phone +49 7761 562-222
Fax +49 7761 562-446
8 a.m. to 5 p.m. CET
info@vita-zahnfabrik.com

Hotline VITA North America

USA: +1 800-828-3839
US Technical Support: +1 888-249-1640
help@vitanorthamerica.com

Hotline VITA Canada

Canada: +1 800-263-4778
Canada Technical Support: +1 800-324-6224



VITA TOOTH SHADE DETERMINATION

Please note:

Our products must be used according to the product brochures. We accept no liability for any damage resulting from incorrect handling or usage. The user is furthermore obliged to check the product before use with regard to its suitability for the intended area of application. We cannot accept any liability if the product is used in conjunction with materials and equipment from other manufacturers that are not compatible or not authorized for use with our product and this results in damage. The VITA Modulbox is not necessarily a component of the product. Publication of this product brochure: 2025-05.

After the publication of this product brochure, any previous versions become obsolete. The current version in each case is available at www.vita-zahnfabrik.com

VITA Zahnfabrik is certified, and the following products bear the mark: **VITA Easyshade® V** bears the CE mark in accordance with the EU guidelines 2014/53/UE, 2014/30/EU and 2011/65/EU. **VITA Easyshade® LITE** bears the CE mark in accordance with the EU guidelines 2014/30/EU and 2011/65/EU.

The products/systems of other manufacturers mentioned in this document are registered trademarks of the respective manufacturers.

VITA Zahnfabrik H. Rauter GmbH & Co. KG

Spitalgasse 3
79713 Bad Säckingen
Germany

Phone: +49 7761 562-0
Hotline: +49 7761 562-222

info@vita-zahnfabrik.com
www.vita-zahnfabrik.com

Follow us on
social media!

