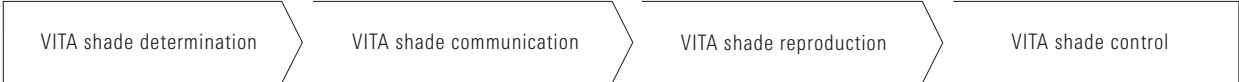


VITA Easyshade® V

Perfect shade determination, maximum reliability.



Date of issue: 2022-03



VITA – perfect match.

VITA

"Cost-effective determination and communication of tooth shades is only possible with digital technology – VITA Easyshade® V is the ideal tool."

Dr. med. dent. Philipp Grohmann (dentist and dental technician)



VITA Easyshade® V

Highly precise shade determination – Reliable shade reproduction

VITA Easyshade V is a digital shade measurement device for determining the tooth shade of natural teeth and veneered ceramic restorations precisely, quickly and reliably.

VITA Easyshade V supports dentists and dental technicians with everything from tooth shade determination and communication, to reproduction and checking the shade of the finished ceramic dental restoration, improving process reliability.

VITA Easyshade V

- **reliable, precisely determined tooth shade information**
thanks to intelligent and objective measurement technology
- **shade determination within seconds to save time and reduce costs**
thanks to measurement results at the touch of a button
- **reliable material selection and shade reproduction**
thanks to exact and detailed tooth shade information
- **simple transmission of tooth shade and image information**
to the laboratory using software or the app



VITA Easyshade® V

One device – Versatile range of applications

VITA Easyshade V offers dental practices and laboratories efficient and reliable support with:

- precise tooth shade determination of natural teeth and veneered restorations
- optimum selection of suitable restoration materials
- professional planning and monitoring of bleaching treatments
- quality testing of layered ceramic restorations, with regard to a target tooth shade
- seamless communication between laboratory and dental practice

Product details

- compact, ergonomic spectrophotometer with intuitive touch display
- modern measurement technology to determine the base tooth shade and shades of individual tooth areas
- output of results in VITA color standards, as well as information of bleached colors according to the American Dental Association (ADA)
- display of lab and LCh values
- bluetooth interface for wireless communication with corresponding software and app



VITA mobileAssist +

The simple way of communicating mobile tooth shades

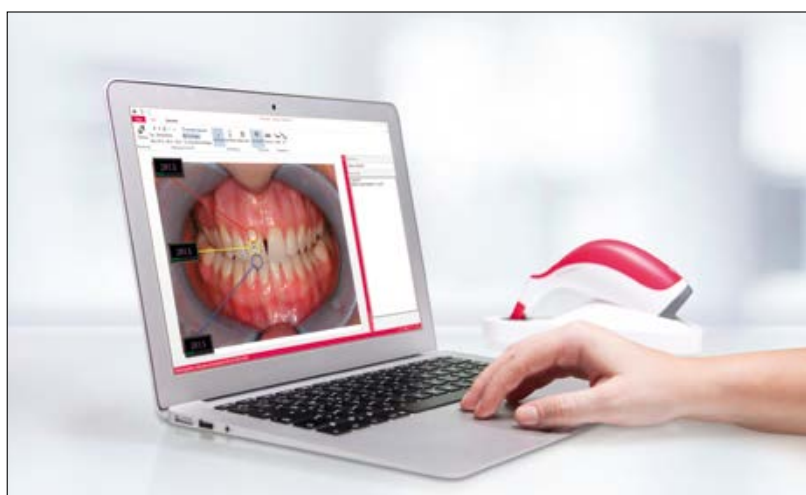
Thanks to the convenient VITA mobileAssist + app, transferring tooth shade information between the practice and the laboratory is easy and efficient. The data from VITA Easyshade V is wirelessly transmitted to the app via an internal Bluetooth interface and can be combined with a patient photo and sent through e-mail. All of the relevant tooth shade information and patient photos can be sent conveniently from a smartphone or tablet.



VITA Assist

Professional tooth shade communication and documentation for the dental practice and laboratory

The Windows based PC software VITA Assist professionally documents and manages dental findings, as well as tooth color information. VITA Assist allows integration of the VITA Easyshade V measurement results into digital patient photos and offers additional image editing tools, as well as a wide range of comment functions. The database allows for efficient patient case management and information exchange between practice and laboratory.



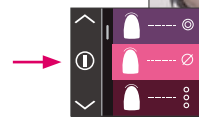
One device – Countless applications



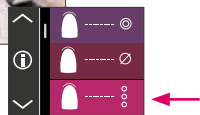
Base shade determination of natural teeth.



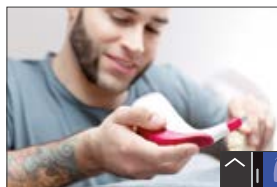
Determination of the average shade of multichromatic natural teeth.



Tooth area shade determination in the cervical, central and incisal areas of natural teeth.



Shade determination of up to six anterior teeth for planning and monitoring of bleaching treatments.



Restoration shade determination during fabrication and quality review of the target shade.



Intraoral shade determination of existing ceramic restorations.



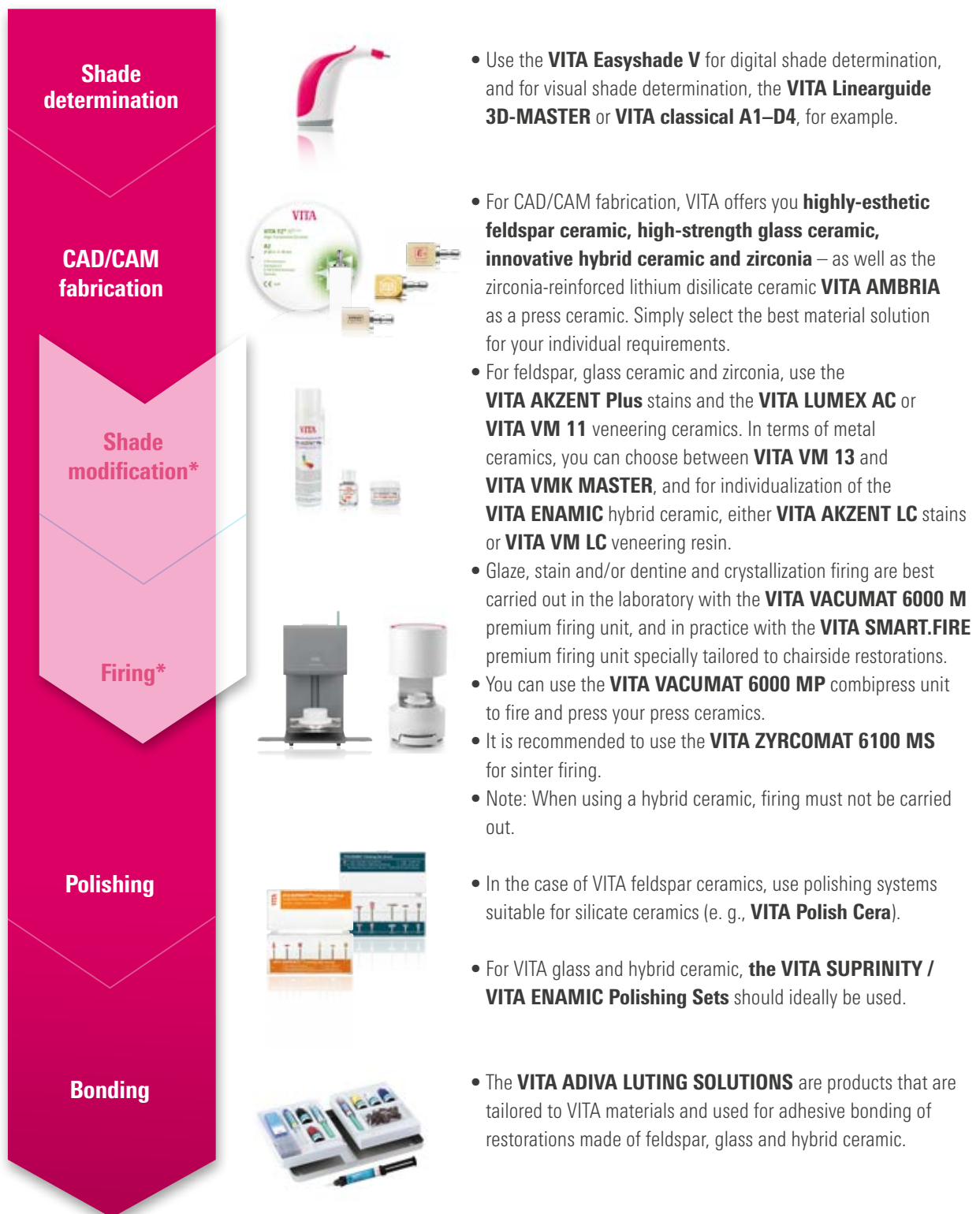
Communication via the VITA mobileAssist + app.

Communication via VITA Assist.



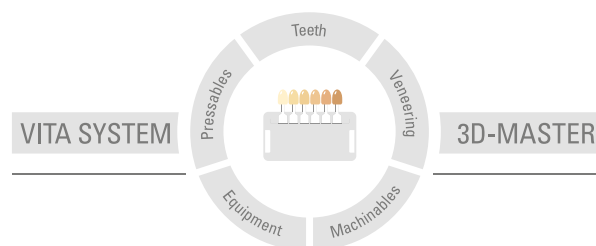
VITA systems

Ideal solutions during processing



* Note "Optional process steps/firing": The feldspar and hybrid ceramic materials can be seated directly after milling and polishing. The following process steps mentioned above are optional for feldspar ceramic. The same steps are required for the hybrid ceramic, but with the hybrid ceramic, firing must not be carried out. When using zirconia, sinter firing is carried out prior to characterization/individualization.

With the unique VITA SYSTEM 3D-MASTER®, all natural tooth shades are systematically determined and perfectly reproduced.



Please note: Our products must be used in accordance with the instructions for use. We accept no liability for any damage resulting from incorrect handling or usage. The user is furthermore obliged to check the product before use with regard to its suitability for the intended area of applications. We cannot accept any liability if the product is used in conjunction with materials and equipment from other manufacturers that are not compatible or not authorized for use with our product and this results in damage. The VITA Modulbox is not a required component of the product. Date of issue of this information for use: 2022-03

After the publication of this information for use, any previous versions become obsolete. The current version can be found under www.vita-zahnfabrik.com

VITA Easyshade® V is CE marked within the meaning of EC Directive 2006/95/EC, 2004/108/EC and 2011/65/EC.

VITA

 VITA Zahnfabrik H. Rauter GmbH & Co.KG
Spitalgasse 3 · D-79713 Bad Säckingen · Germany
Tel. +49(0)7761/562-0 · Fax +49(0)7761/562-299
Hotline: Tel. +49(0)7761/562-222 · Fax +49(0)7761/562-446
www.vita-zahnfabrik.com · info@vita-zahnfabrik.com
 facebook.com/vita.zahnfabrik